



HOLTHAUSEN
CLEAN TECHNOLOGY





HOLTHAUSEN

CLEAN TECHNOLOGY

WORKING ON ZERO-EMISSION MOBILITY

Holthausen Clean Technology has been involved in hydrogen-electric and battery-electric vehicles for more than ten years now.

We started as a developer, converting vehicles powered by fossil fuels to emission-free sustainable future with zero emissions. One example from our portfolio is the world's first hydrogen-powered sweeper.

50Tons GVW 4x2 tractor for friesland campina



27Tons GVW 6x2 rigid chassis hook lift + crane



Rigid chassis in different configurations available



50Tons GVW FCEV 6x2 for Maserfrakt Sweden



**64Tons GVW FCEV 6x2 for Maserfrakt Sweden (only one in the world)
1250 KM range fully loaded**





HOLTHAUSEN
CLEAN TECHNOLOGY

160

Electric driveline

Electric motor type: 160-M
Motor power: 160 kW
Voltage system: 450 V
Battery pack: 70 kWh
Onboard-charger: 22 kW
Type of connection for charging: CCS / Type 2

Hydrogen driveline

Type Fuel Cell: Horizon-80-F
Power Fuel Cell: 80 kW
Cylinder pressure: 350 Bar
Standard amount of Hydrogen: 30 kg

Basic specifications chassis

Type chassis: 160 (DAF LF)
Minimal wheelbase: 3.900 mm
Type of gearbox: 6 speed automatic Allison gearbox
PTO: Possibility to be connected to the gearbox
Structure options: Box, RCV, Refrigerator, empty chassis

Options for 160

Remove 1 or add 1 extra cylinder: 5 kg per cylinder at 350 Bar
Extra Fuel Cell power: Can be adjusted by a minimum of 20 kW



HOLTHAUSEN
CLEAN TECHNOLOGY

250

Electric driveline

Electric motor type: 250-M
Motor power: 250 kW
Voltage system: 700 V
Battery pack: 140 kWh
Onboard-charger: 22 kW
Type of connection for charging: CCS / Type 2

Hydrogen driveline

Type Fuel Cell: Horizon-120-F
Power Fuel Cell: 120 kW
Cylinder pressure: 350 Bar
Standard amount of Hydrogen: 30 kg

Basic specifications chassis

Type chassis: 250 (DAF CF)
Minimal wheelbase: 3.850 mm
Type of gearbox: 12 speed automatic TraXon gearbox
PTO: Possibility to be connected to the gearbox
Structure options: Box, RCV, Refrigerator, empty chassis

Options for 250

Remove 1 or add 1 extra cylinder: 5 kg per cylinder at 350 Bar
Stronger motor: 450 kW motor
Extra Fuel Cell power: Can be adjusted by a minimum of 20 kW



HOLTHAUSEN
CLEAN TECHNOLOGY

450

Electric driveline

Electric motor type: 450-M
Motor power: 450 kW
Voltage system: 700 V
Battery pack: 140 kWh
Onboard-charger: 22 kW
Type of connection for charging: CCS / Type 2

Hydrogen driveline

Type Fuel Cell: Horizon-120-F
Power Fuel Cell: 120 kW
Cylinder pressure: 350 Bar
Standard amount of Hydrogen: 30 kg

Basic specifications chassis

Type chassis: 450 (DAF XF)
Minimal wheelbase: 3.850 mm
Type of gearbox: 12 speed automatic TraXon gearbox
PTO: Possibility to be connected to the gearbox
Structure options: Box, RCV, Refrigerator, empty chassis

Options for 450

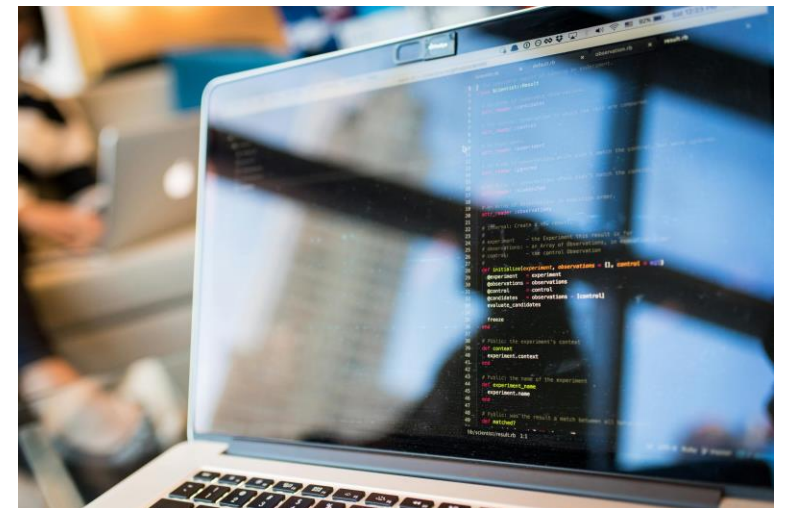
Remove 1 or add 1 extra cylinder: 5 kg per cylinder at 350 Bar
Extra Fuel Cell power: Can be adjusted by a minimum of 20 kW



HOLTHAUSEN
CLEAN TECHNOLOGY

Development & Engineering

We also offer in house engineering for new projects for both electrical and hydrogen applications including software development



- WORKING ON ZERO-EMISSION MOBILITY

- Holthausen Clean Technology is involved in several projects to solve the chicken and egg problem. We currently own two gas stations.

- Our first station is situated at Groningen. The second station is situated at Amsterdam, in the middle of Amsterdam's logistic center.



HOLTHAUSEN
CLEAN TECHNOLOGY



HOLTHAUSEN
CLEAN TECHNOLOGY

If you want to stay informed of all developments, visit the website and register for all our news:

www.cleantechnology.nl